

Traffic Accident in Thailand

What went wrong?



**World Health
Organization**

นายแพทย์วิทยา ชาติบัญชาชัย

*WHO Expert Advisory Panel
for Injury Prevention and Control*

In each year , 1.2 million traffic injured patients visited ER of the public hospitals



2012 surveyed from all public hospital in Thailand , TCC-KKH

- Every hour, 2 Thais will die on the road
- Every hour, 200 Thais will get serious injured
- Every hour, 3 Thais will become permanent handicap



New car policy



AEC; Traffic crashes from visitors, 15 FEB 13





Effect of AEC in transportation

- Transportation will be much increased :
business, tourism, education, health, etc
- Effects:
 - More traffic jam in large cities
 - More traffic crashes

different in knowledge, culture
familiarity with the road
different in road condition
safety conscious
degree of law enforcement





Not only the others
But we are also the victim

At Srisakate
This new year





Source: Pre-hospital service team, Maharaj Nakhon Rajsima Hospital

Collapsed of the bridge across Pasak River

28 April 2013









รถทัวร์ปรับอากาศ ปอ.2 ยโสธร-กรุงเทพฯ ประสบอุบัติเหตุ มีผู้เสียชีวิตถูกไฟคลอก 30 ศพ
เหตุเกิดบนถนนมิตรภาพ อ.ปากช่อง จ.นครราชสีมา เมื่อเดือน มี.ค. 2550

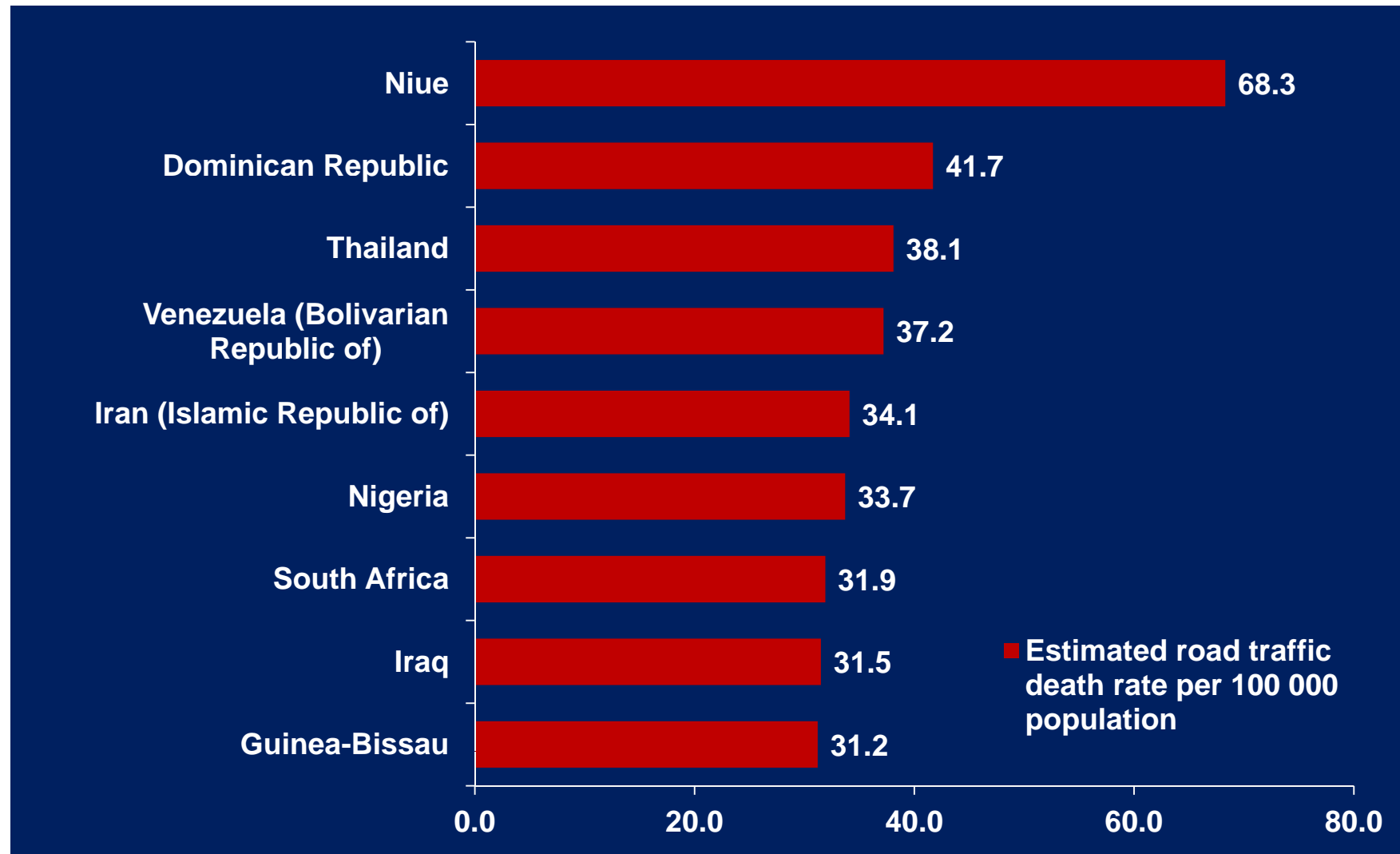
Estimated total RTI deaths for 2010

- Report number of deaths for 2010 = **13766**
- Estimated total RTI deaths for 2010 *(13 variables used for estimation: GDP, vehicle/capita, road density, national speed limit urban-rural, health system access, alc consumption, population working, percentage MC, corruption index, national policy for walking/cycling, population)*
= **26312**
- Estimated total RT fatality rate per 100,000 population
= **38.07** , Rank the 6th worst in the world

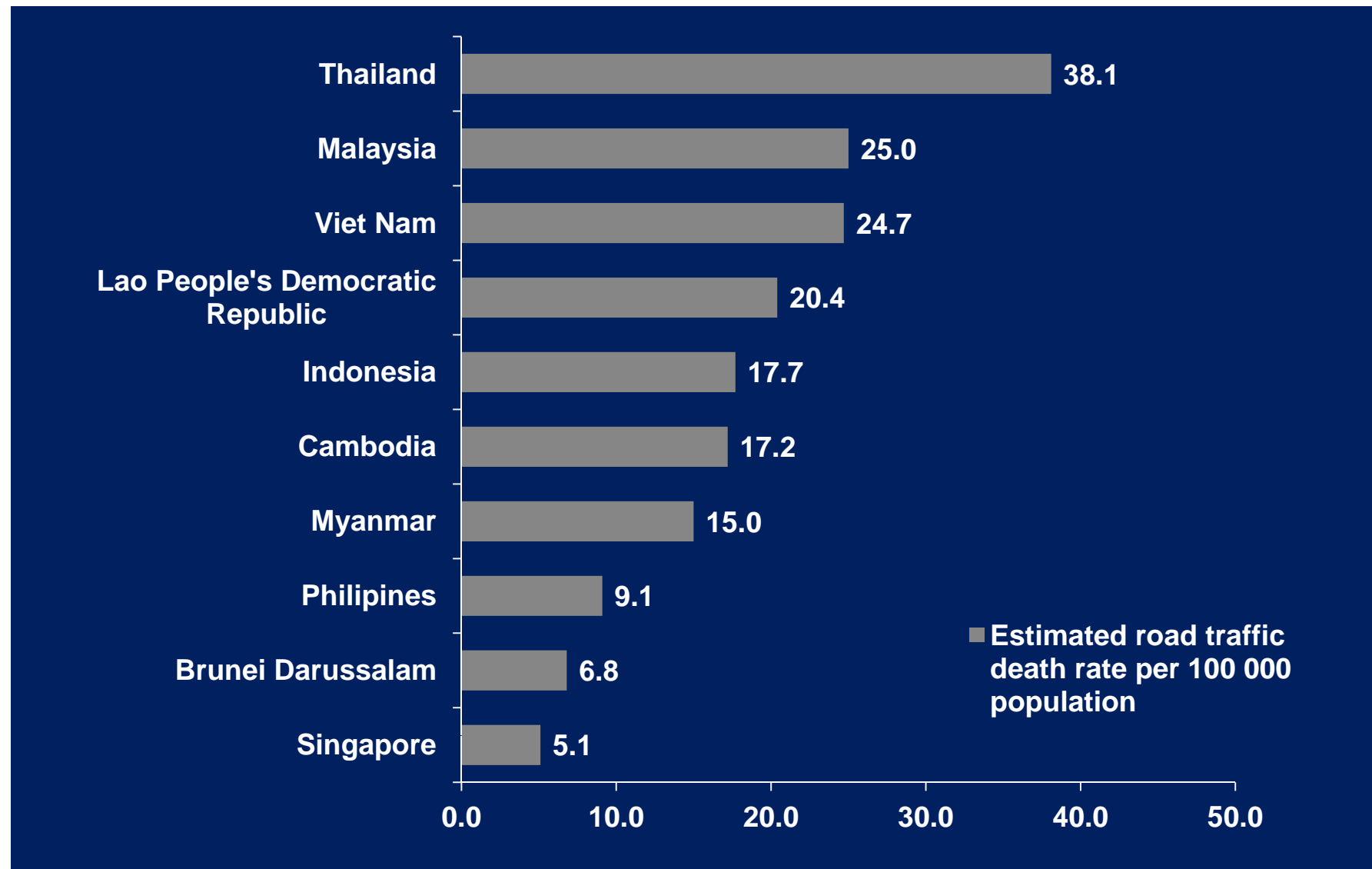


Etienne Krug
8 November 2012
WHO-Geneva

10 highest incidence of road traffic death



Road traffic death in AC



British couple killed in crash on world cycling tour

A British couple who have been cycling around the world have been killed in a crash in Thailand.



Peter Root and Mary Thompson, both 32

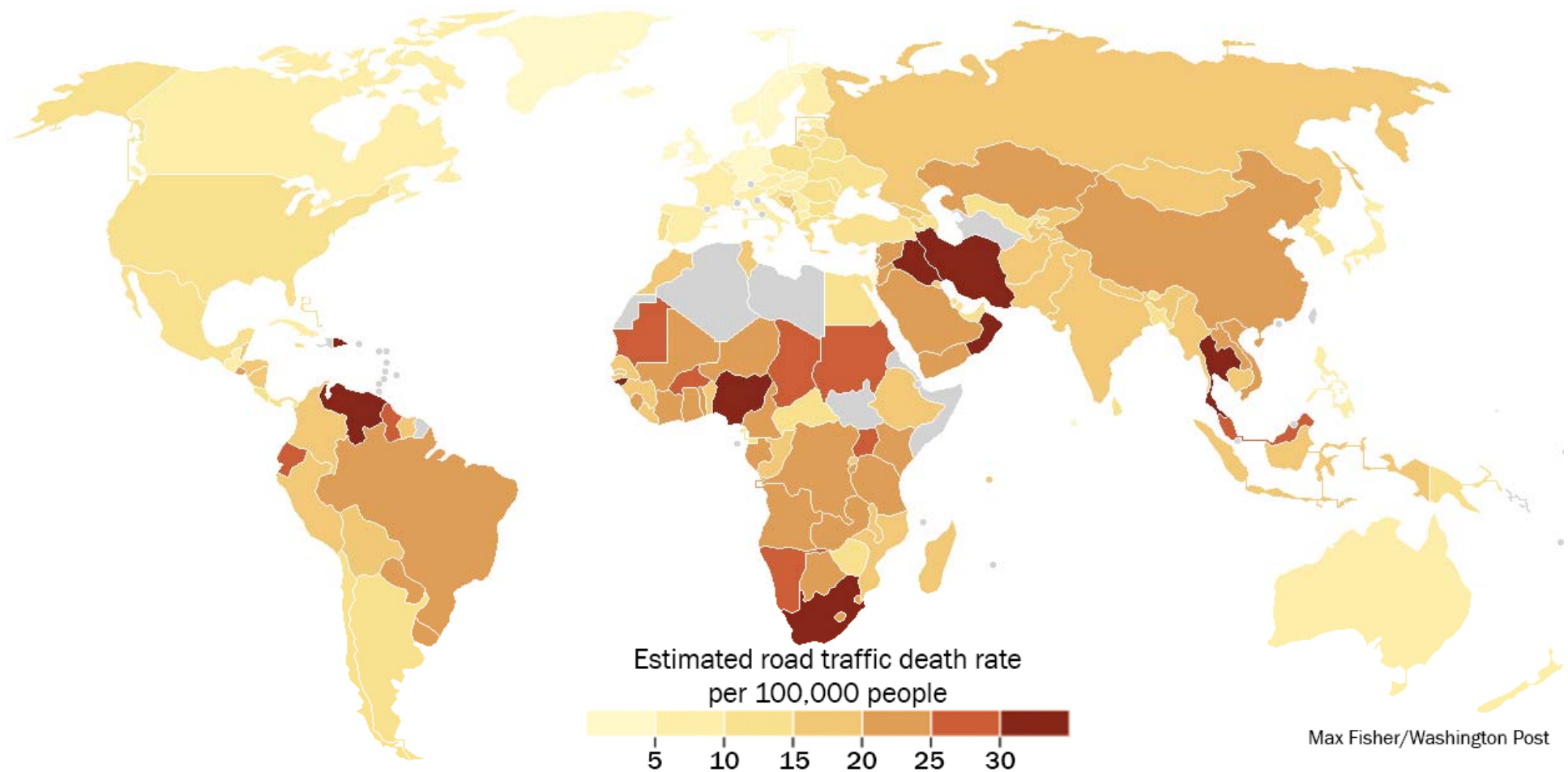
13 FEB 2013

Peter Root and Mary Thompson, an English couple who drove their bike to 22 countries were hit by a new pick up on high way No 304, Panomsarakarm



A map of the countries with the most dangerous roads

By [Max Fisher](#), Published: June 7, 2013 at 9:42 am

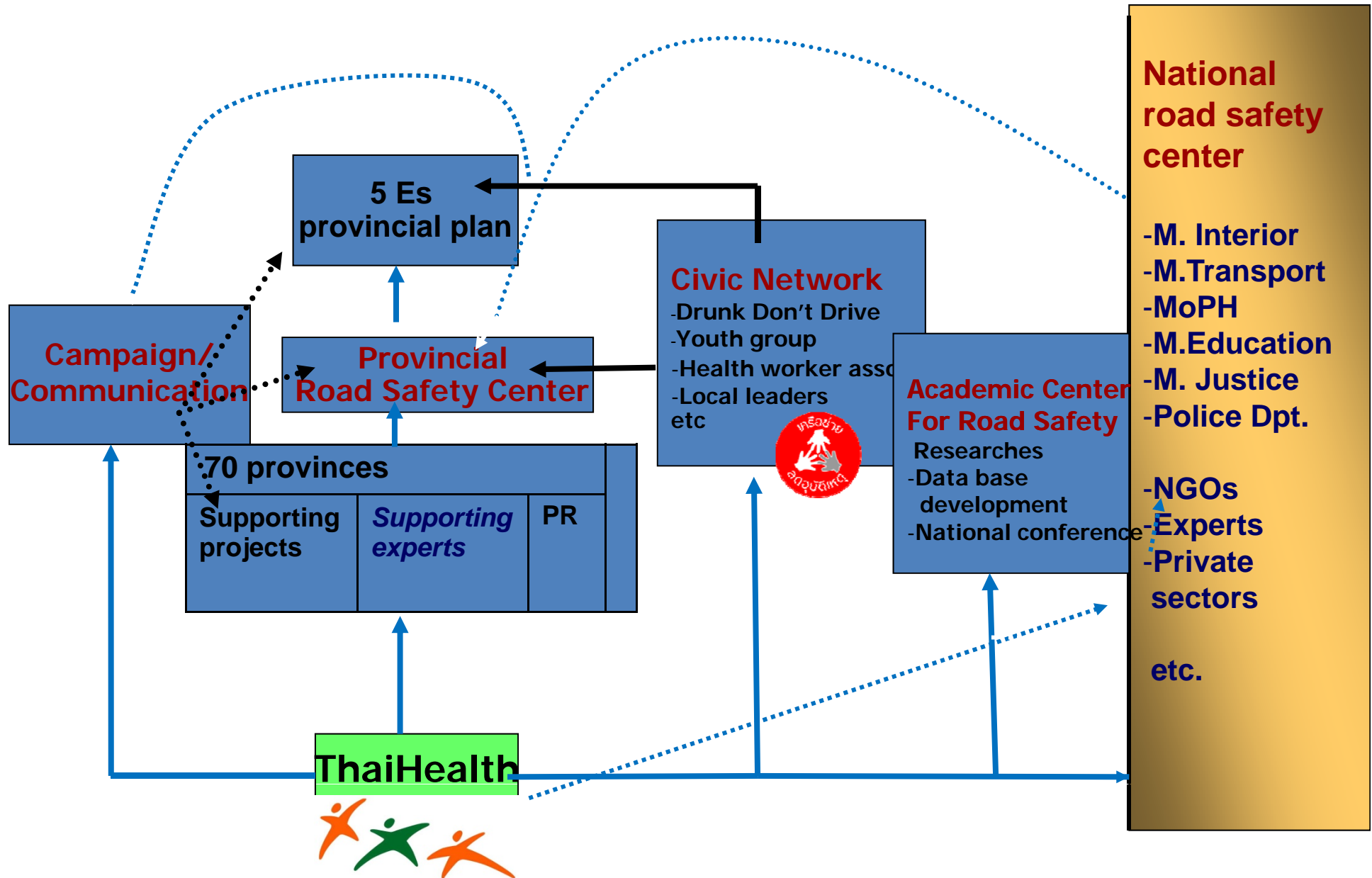


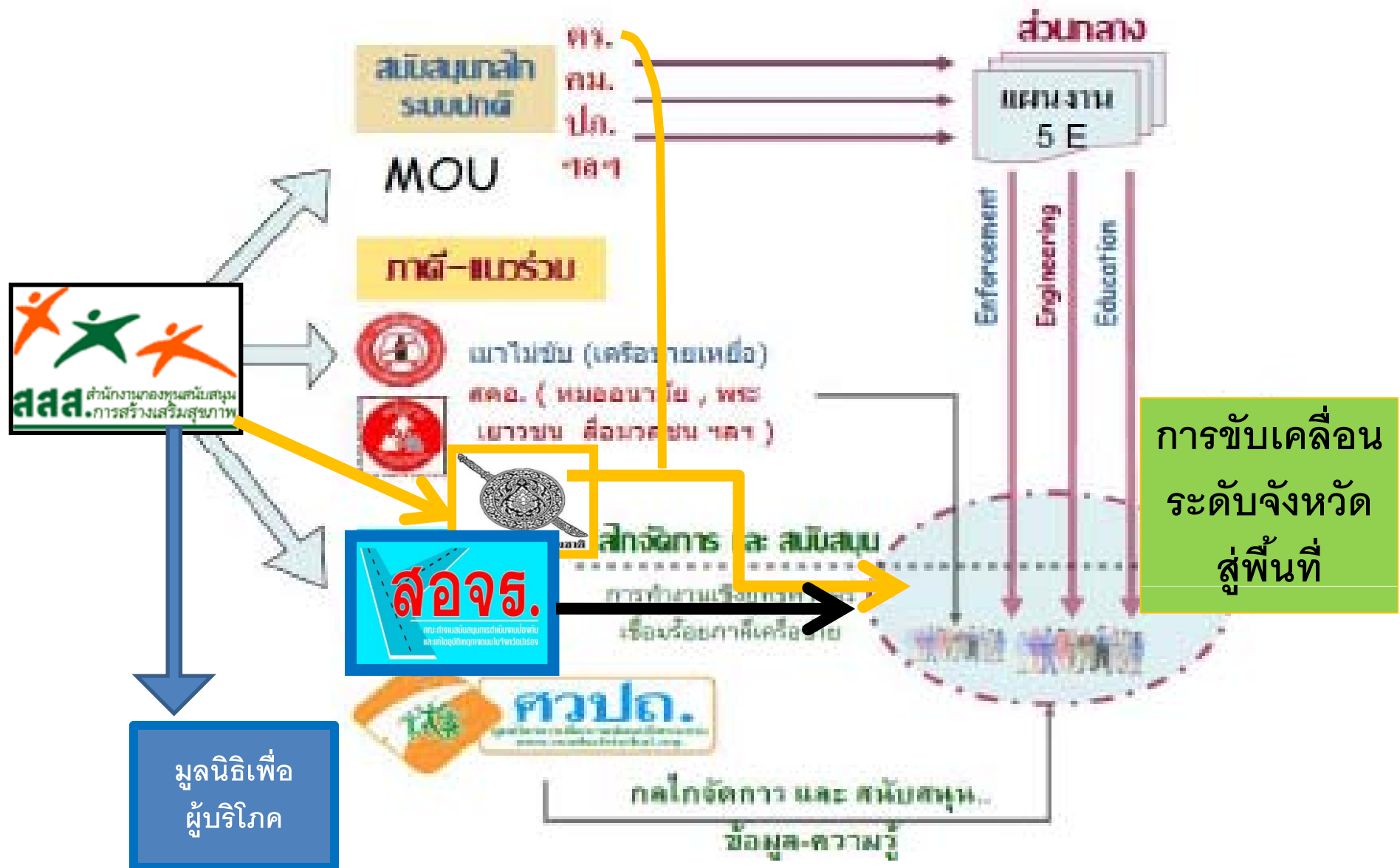
www.washingtonpost.com

What went wrong?

- The assigned focal organization (DDPM, MI) was not well authorized and supported enough to cope with the large, complex problem as traffic injuries.
- The national traffic injury data system was fragmented . Data from different departments were different resulting in questionable reliability of national report.
- There was National Plan for Decade of Action but the implementation mechanism of the plan was still inadequate
- Law enforcement which was the most important mechanism to control risk behavior was in adequate and not strong enough
- Vehicle and road standard needed revision
- Licensing system was out of date
- Financial budget support to implement the program according to the National Action Plan was inadequate
- The monitoring system in each pillar of Decade of Action were not well designed and not implemented effectively.
- Public concern and customer protection mechanism was still not strong enough.

Overview of the plan supporting road safety of ThaiHealth



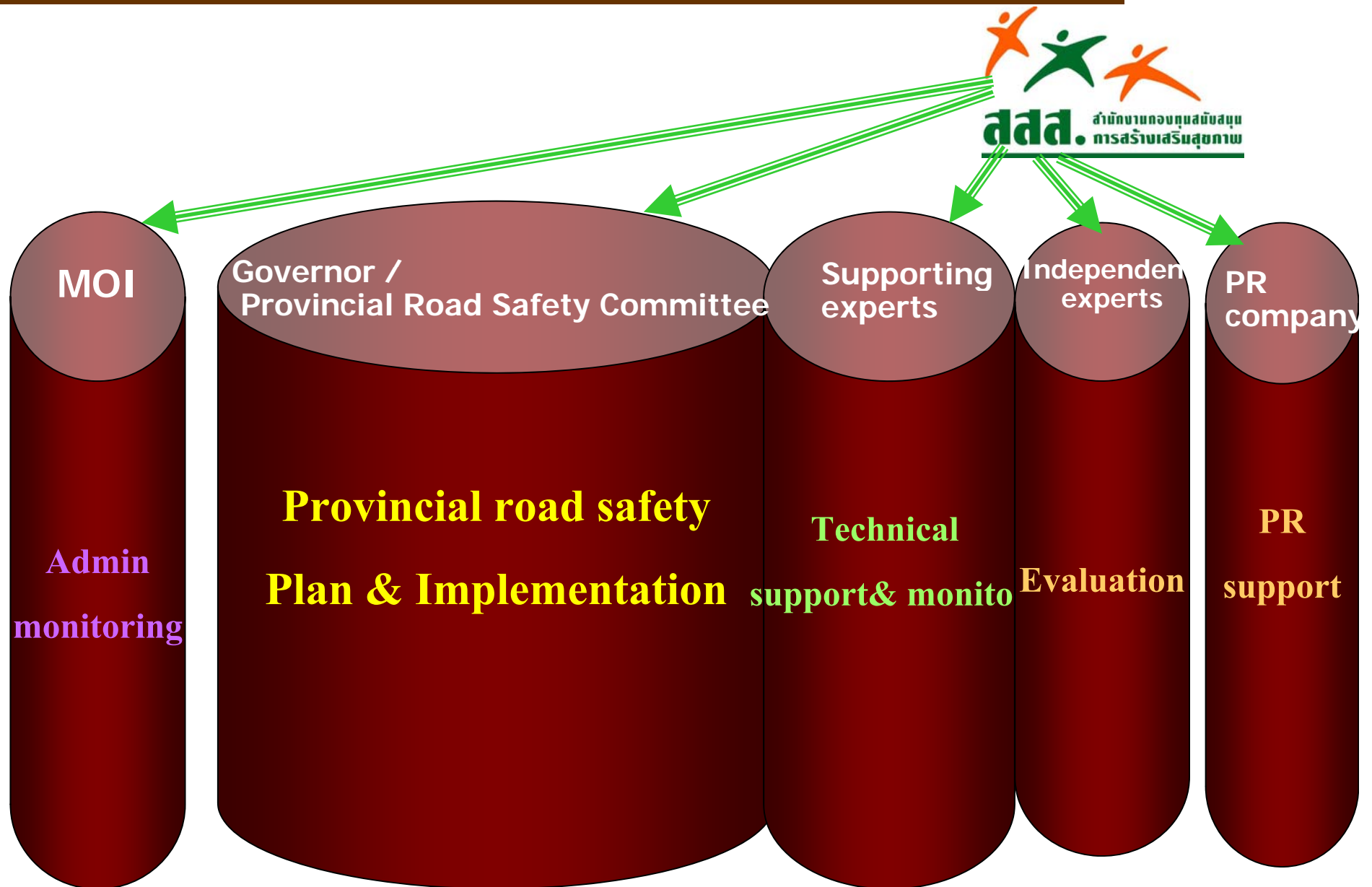


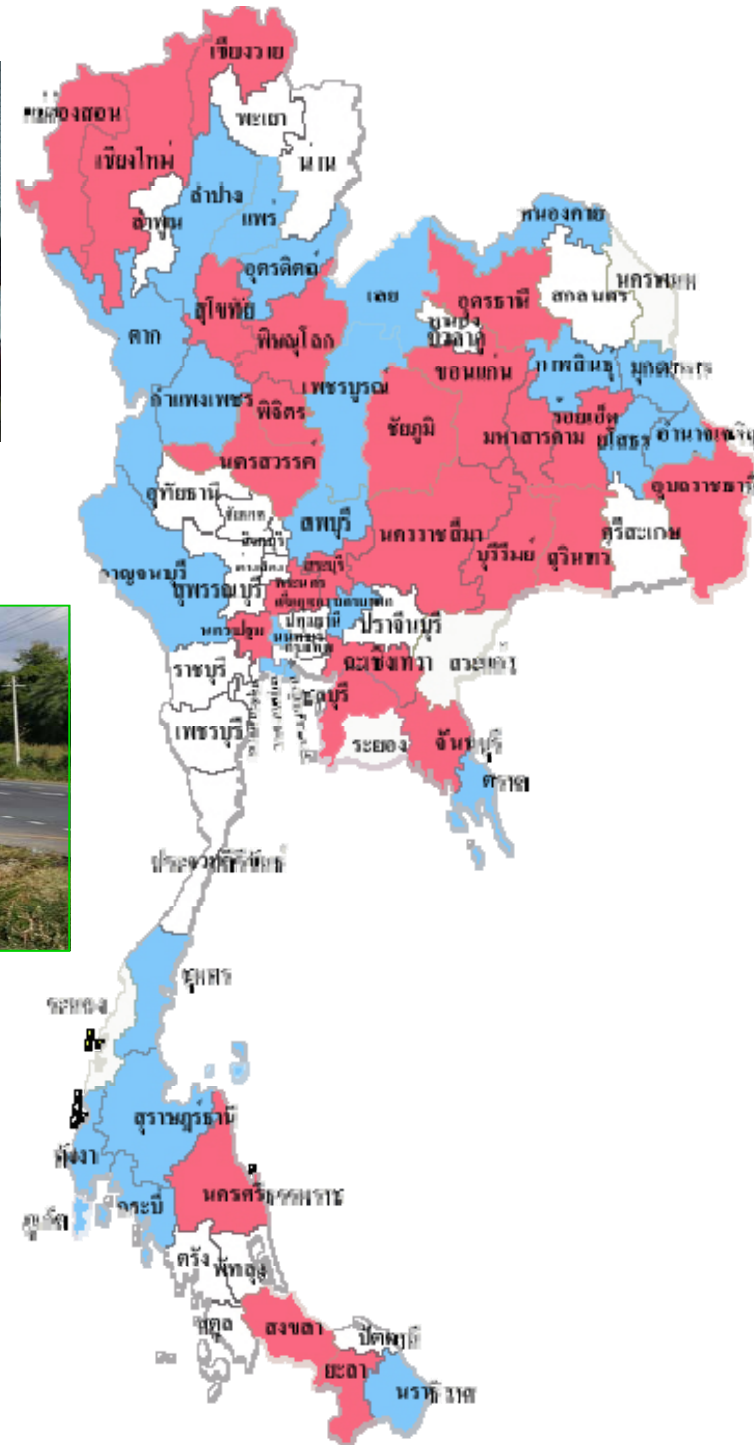
ช่องทางการผลักดันของ สสส.เพื่อลดทุกซ์บนถนน ปี 2554

Strategic Model



Participatory provincial road safety programme (PRSP)





PRSP

